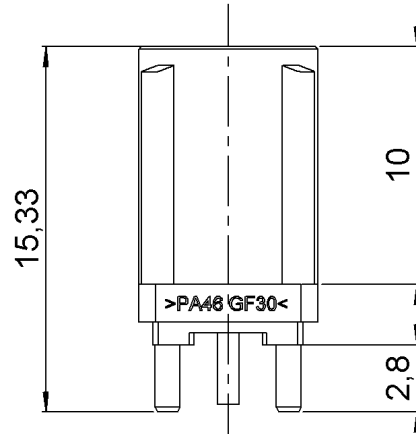


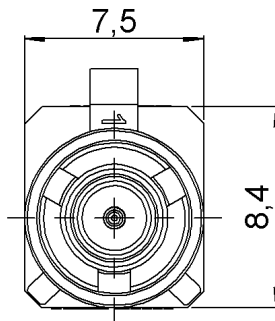
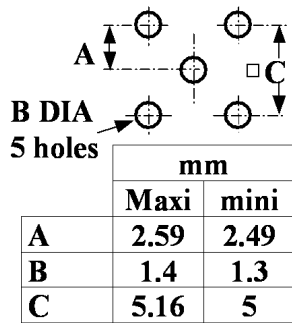
STRAIGHT PCB RECEPTACLE

R197.150.K07

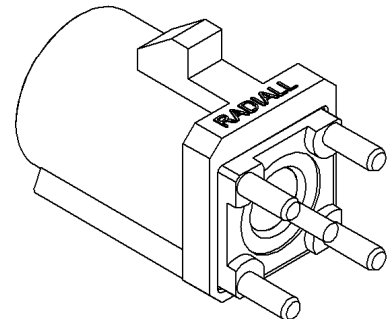
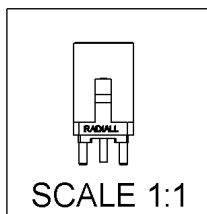
Series : **SMB CARLOCK**



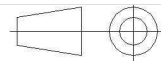
PANEL CUT OUT



CODING K



All dimensions are in mm.



MATERIALS

COMPONENTS

PLATING (µm)

BODY	-
CENTER CONTACT	-
OUTER CONTACT	-
INSULATOR	PTFE
GASKET	-
OTHERS PARTS	PA 46 GF30 (STANYL TE200F6) Color
-	CURRY(RAL1027)
-	-
-	-

GOLD 0.5 OVER NICKEL 2

ssue : 0751 A

In the effort to improve our products, we reserve the right to make changes judged to be necessary.



STRAIGHT PCB RECEPTACLE

R197.150.K07

Series : **SMB CARLOCK**

PACKAGING

SPECIFICATION

QS9000 A 00

Standard	Unit	Other
100	'W' option	Contact us

ELECTRICAL CHARACTERISTICS

ENVIRONMENTAL

Impedance	50	Ω
Frequency	0-4	GHz
VSWR	1.05 + 0,0080	x F(GHz) Maxi
Insertion loss	0.03	$\sqrt{F(GHz)}$ dB Maxi
RF leakage	- (57)	- F(GHz) dB Maxi
Voltage rating	500	Veff Maxi
Dielectric withstanding voltage	1000	Veff mini
Insulation resistance	1000	M Ω mini

Operating temperature	-40/+110	$^{\circ}$ C
Hermetic seal	NA	Atm.cm3/s
Panel leakage	NA	

OTHER CHARACTERISTICS

Assembly instruction **NA**

Others :
COAX TRANSMISSION LINE ONLY

MECHANICAL CHARACTERISTICS

Center contact retention		
Axial force – Mating end	5	N mini
Axial force – Opposite end	10	N mini
Torque	NA	N.cm mini
Recommended torque		
Mating	NA	N.cm
Panel nut	NA	N.cm
Mating life	100	Cycles mini
Weight	1,2700	g

ssue : 0751 A

In the effort to improve our products, we reserve the right to make changes judged to be necessary.

